

# Universal extruded slats for rolling shutters

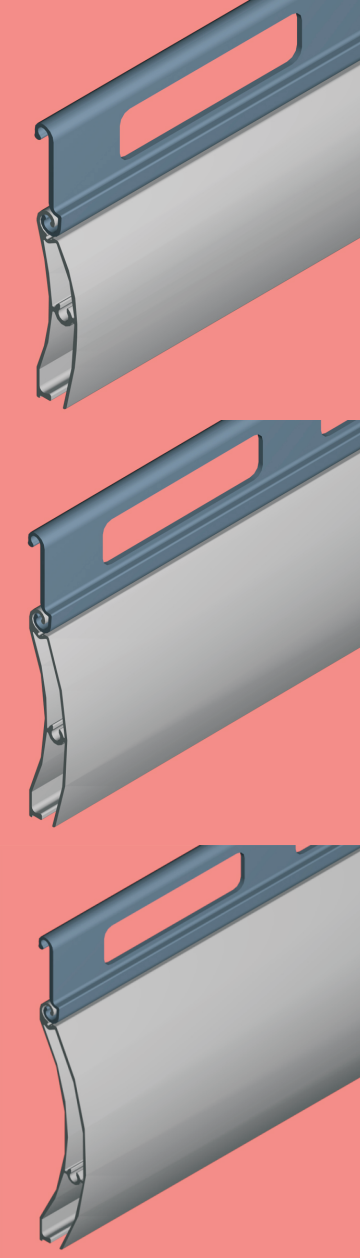
(Planned and developed by Haim Azoulai from Kol-Chen, registered as patent.)

Rolling shutter Star-Chen radiating light, air, and security, from the new generation of slats for rolling shutters, developed by Haim Azoulai from Kol-Chen. Unique rolling shutter, that can be made in a large assortment of different types of quality rolling shutters, with especially small diameter; see table diameter of roller.

The shutter is comprised of 2 profiles:

The body of the slat

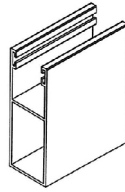
Linking chain 27.8 mm



## Extruded midi 49 mm slat

General information:

Body thickness of slat .....12.5 mm  
 Side body thickness of slat .....1 mm  
 Linking chain between slat to pierced slat..... 27.8mm  
 Max recommended light opening.....3.5 m  
 Weight per meter.....8.5 kg  
 Number of slats per meter (height).....20



**Catalog № E6343**  
 distant guide rail  
 23 x 64 mm  
 (compatible for 61 mm slat)

Table of diameter rolling shutter slat "Star-Chen" 49 mm (graded model)

Weight per meter: **8.5 kg**  
 Number of slats per meter (height): **20**



Opening height (cm)	Type of tube	
	Tube 60 mm	Tube 70 mm
100	150	160
150	170	180
200	185	190
250	220	230
300	235	240
350	245	260
400	260	270

## Extruded 61 mm slat

General information:

Body thickness of slat .....13.5 mm  
 Side body thickness of slat .....1 mm  
 Linking chain between slat to pierced slat..... 27.8mm  
 Max recommended light opening.....5.5 m  
 Weight per meter.....8.0 kg  
 Number of slats per meter (height).....16.3



**Catalog № E6331**  
 distant guide rail  
 28 x 75 mm  
 (compatible for 49 mm slat)

Table of diameter rolling shutter slat "Star-Chen" 61 mm (graded model)

Weight per meter: **8.0 kg**  
 Number of slats per meter (height): **16.3**

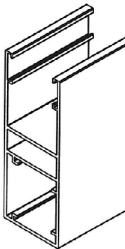


Opening height (cm)	Type of tube	
	Tube 70 mm	Tube 89 mm
100	160	165
150	180	185
200	200	215
250	210	235
300	230	245
350	250	265
400	260	280

## Extruded 81 mm slat

General information:

Body thickness of slat .....18.5 mm  
 Side body thickness of slat .....1 mm  
 Linking chain between slat to pierced slat..... 27.8mm  
 Max recommended light opening.....5.5-6.0 m  
 Weight per meter.....8.0 kg  
 Number of slats per meter (height).....12.5



**Catalog № E6509**  
 distant guide rail  
 34 x 90 mm

Table of diameter rolling shutter slat "Star-Chen" 81 mm (graded model)

Weight per meter: **8.0 kg**  
 Number of slats per meter (height): **12.5**



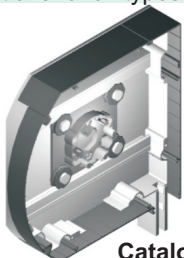
Opening height (cm)	Type of tube	
	Tube 70 mm	Tube 89 mm
100	150	165
150	180	185
200	200	210
250	220	225
300	240	245
350	260	265
400	270	275

## Accessories for rolling shutters

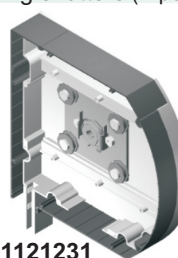
Unique accessories for rolling shutters eases the functions of the shutter; relieves pressure from the motor and the shutter; and prevents problems and malfunctions for all types of rolling shutters (wipes out problems & malfunctions) Our motto: quality and beauty without compromise.



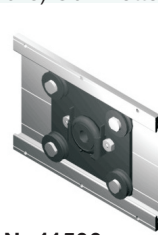
**Catalog № 11491**  
 Guide of the shutter (funnel)



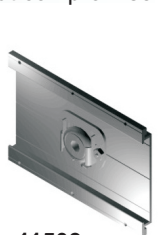
**Catalog № 1121231**  
 Set end cups connected with the adjustable carriage to reduce the diameter of the roller.



**Catalog № 11500**  
 Set carriages to reduce the diameter of the roller connected with the base of the motor and base of the lager with profile guide rail.



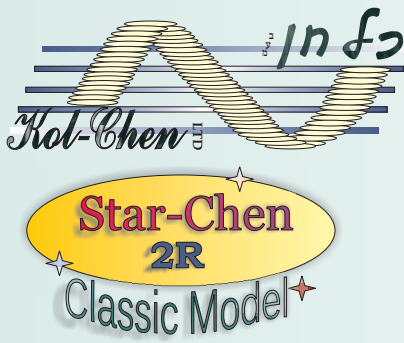
**Catalog № 11503**  
 Set profile guides affixing the tube connecting the base of the motor to base of the lager.



Kol-Chen 30 Hamelache St. Holon Israel 58819 Tel.: 972-3-5595577 Fax: 972-3-5595581

E-Mail: [info@kol-chen.com](mailto:info@kol-chen.com) Web Site: [www.kol-chen.com](http://www.kol-chen.com)





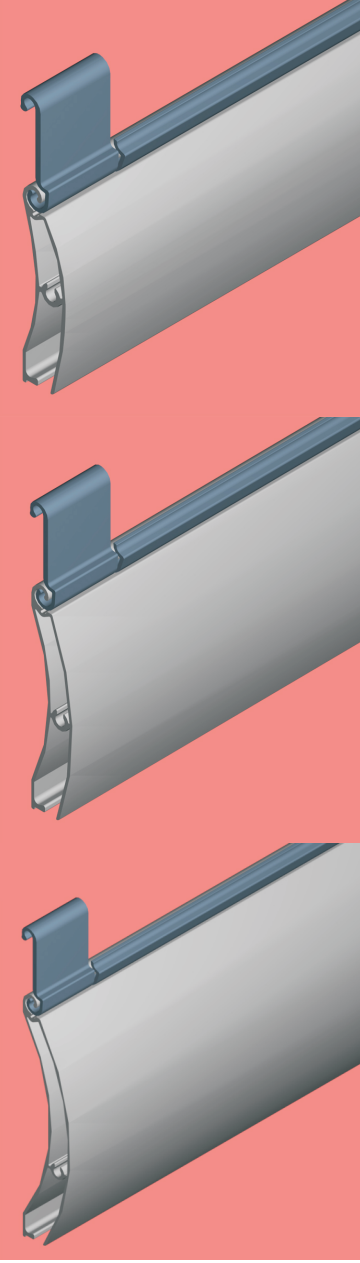
# Universal extruded slats for rolling shutters

(Planned and developed by Haim Azoulai from Kol-Chen, registered as patent.)

Rolling shutter Star-Chen radiating light, air, and security, from the new generation of slats for rolling shutters, developed by Haim Azoulai from Kol-Chen. Unique rolling shutter, that can be made in a large assortment of different types of quality rolling shutters, with especially small diameter; see table diameter of roller.

The shutter is comprised of 3 profiles:

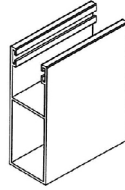
- The body of the slat
- Spacer
- Linking chain 27.8 mm



### Extruded midi 49 mm slat

General information:

Body thickness of slat .....12.5 mm  
 Side body thickness of slat .....1 mm  
 Linking chain between slat to pierced slat..... 27.8mm  
 Max recommended light opening.....3.5 m  
 Weight per meter.....8.5 kg  
 Number of slats per meter (height).....20



**Catalog № E6343**  
 distant guide rail  
 23 x 64 mm  
 (compatible for 61 mm slat)

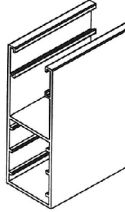
Table of diameter rolling shutter slat "Star-Chen" 49 mm (classic model)  
 Weight per meter: **8.5 kg**  
 Number of slats per meter (height): **20**

Opening height (cm)	Type of tube	
	Tube 60 mm	Tube 70 mm
100	150	160
150	170	180
200	185	190
250	220	230
300	235	240
350	245	260
400	260	270

### Extruded 61 mm slat

General information:

Body thickness of slat .....13.5 mm  
 Side body thickness of slat .....1 mm  
 Linking chain between slat to pierced slat..... 27.8mm  
 Max recommended light opening.....5.5 m  
 Weight per meter.....8.0 kg  
 Number of slats per meter (height).....16.3



**Catalog № E6331**  
 distant guide rail  
 28 x 75 mm  
 (compatible for 49 mm slat)

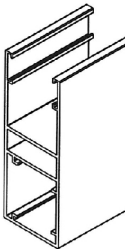
Table of diameter rolling shutter slat "Star-Chen" 61 mm (classic model)  
 Weight per meter: **8.0 kg**  
 Number of slats per meter (height): **16.3**

Opening height (cm)	Type of tube	
	Tube 70 mm	Tube 89 mm
100	160	165
150	180	185
200	200	215
250	210	235
300	230	245
350	250	265
400	260	280

### Extruded 81 mm slat

General information:

Body thickness of slat .....18.5 mm  
 Side body thickness of slat .....1 mm  
 Linking chain between slat to pierced slat..... 27.8mm  
 Max recommended light opening.....5.5-6.0 m  
 Weight per meter.....8.0 kg  
 Number of slats per meter (height).....12.5



**Catalog № E6509**  
 distant guide rail  
 34 x 90 mm

Table of diameter rolling shutter slat "Star-Chen" 81 mm (classic model)  
 Weight per meter: **8.0 kg**  
 Number of slats per meter (height): **12.5**

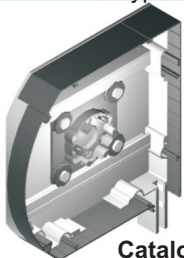
Opening height (cm)	Type of tube	
	Tube 70 mm	Tube 89 mm
100	150	165
150	180	185
200	200	210
250	220	225
300	240	245
350	260	265
400	270	275

## Accessories for rolling shutters

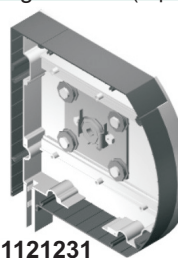
Unique accessories for rolling shutters eases the functions of the shutter; relieves pressure from the motor and the shutter; and prevents problems and malfunctions for all types of rolling shutters (wipes out problems & malfunctions) Our motto: quality and beauty without compromise.



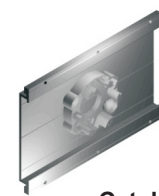
**Catalog № 11491**  
 Guide of the shutter (funnel)



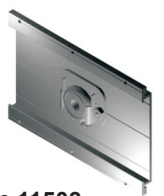
**Catalog № 1121231**  
 Set end cups connected with the adjustable carriage to reduce the diameter of the roller.



**Catalog № 11500**  
 Set carriages to reduce the diameter of the roller connected with the base of the motor and base of the lager with profile guide rail.



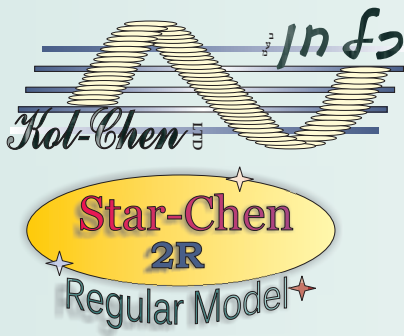
**Catalog № 11503**  
 Set profile guides affixing the tube connecting the base of the motor to base of the lager.



Kol-Chen 30 Hamelache St. Holon Israel 58819 Tel.: 972-3-5595577 Fax: 972-3-5595581

E-Mail: [info@kol-chen.com](mailto:info@kol-chen.com) Web Site: [www.kol-chen.com](http://www.kol-chen.com)





# Universal extruded slats for rolling shutters

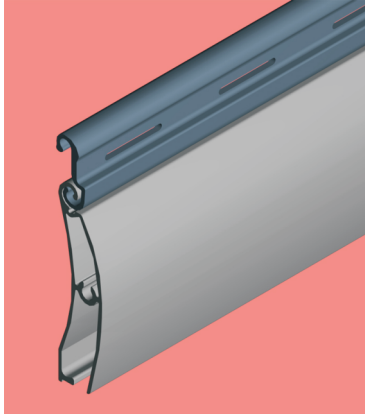
(Planned and developed by Haim Azoulai from Kol-Chen, registered as patent.)

Rolling shutter Star-Chen radiating light, air, and security, from the new generation of slats for rolling shutters, developed by Haim Azoulai from Kol-Chen. Unique rolling shutter, that can be made in a large assortment of different types of quality rolling shutters, with especially small diameter; see table diameter of roller.

The shutter is comprised of 2 profiles:

The body of the slat

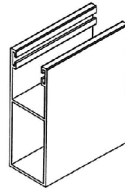
Linking chain 16.8 mm



### Extruded midi 49 mm slat

General information:

Body thickness of slat .....12.5 mm  
 Side body thickness of slat .....1 mm  
 Linking chain between slat to pierced slat.....16.8mm  
 Max recommended light opening.....3.5 m  
 Weight per meter.....8.5 kg  
 Number of slats per meter (height).....20



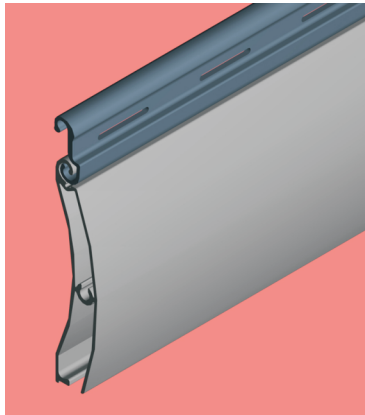
**Catalog № E6343**  
 distant guide rail  
 23 x 64 mm  
 (compatible for 61 mm slat)

Table of diameter rolling shutter slat "Star-Chen" 49 mm (regular model)

Weight per meter: **8.5 kg**  
 Number of slats per meter (height): **20**



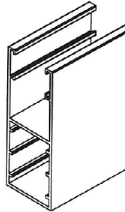
Opening height (cm)	Type of tube	
	Tube 60 mm	Tube 70 mm
100	140	145
150	165	170
200	185	190
250	205	210
300	225	220
350	235	240
400	250	255



### Extruded 61 mm slat

General information:

Body thickness of slat .....13.5 mm  
 Side body thickness of slat .....1 mm  
 Linking chain between slat to pierced slat.....16.8mm  
 Max recommended light opening.....5.5 m  
 Weight per meter.....8.0 kg  
 Number of slats per meter (height).....16.3



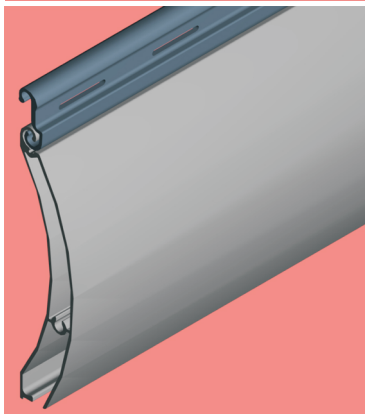
**Catalog № E6331**  
 distant guide rail  
 28 x 75 mm  
 (compatible for 49 mm slat)

Table of diameter rolling shutter slat "Star-Chen" 61 mm (regular model)

Weight per meter: **8.0 kg**  
 Number of slats per meter (height): **16.3**



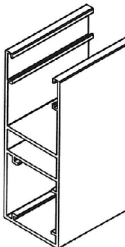
Opening height (cm)	Type of tube	
	Tube 70 mm	Tube 89 mm
100	145	155
150	165	175
200	185	195
250	205	210
300	225	230
350	235	245
400	260	265



### Extruded 81 mm slat

General information:

Body thickness of slat .....18.5 mm  
 Side body thickness of slat .....1 mm  
 Linking chain between slat to pierced slat.....16.8mm  
 Max recommended light opening.....5.5-6.0 m  
 Weight per meter.....8.0 kg  
 Number of slats per meter (height).....12.5



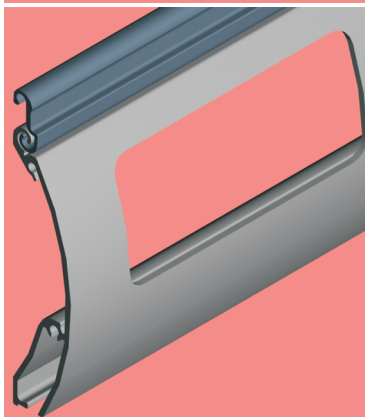
**Catalog № E6509**  
 distant guide rail  
 34 x 90 mm

Table of diameter rolling shutter slat "Star-Chen" 81 mm (regular model)

Weight per meter: **8.0 kg**  
 Number of slats per meter (height): **12.5**



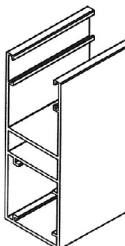
Opening height (cm)	Type of tube	
	Tube 70 mm	Tube 89 mm
100	155	160
150	175	175
200	195	200
250	215	220
300	235	240
350	250	255
400	260	265



### Extruded grated 81 mm slat

General information:

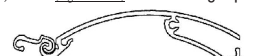
Body thickness of slat .....20.0 mm  
 Side body thickness of slat .....1.8 mm  
 Linking chain between slat to pierced slat.....16.8mm  
 Max recommended light opening.....6.0-6.5 m  
 Weight per meter.....9.5 kg  
 Number of slats per meter (height).....12.5



**Catalog № E6509**  
 distant guide rail  
 34 x 90 mm

Table of diameter rolling shutter slat "Star-Chen" (grated) 81 mm (regular model)

Weight per meter: **9.5 kg**  
 Number of slats per meter (height): **12.5**



Opening height (cm)	Type of tube	
	Tube 70 mm	Tube 89 mm
100	155	160
150	175	175
200	195	200
250	215	220
300	235	240
350	250	255
400	260	265



Kol-Chen 30 Hamelache St. Holon Israel 58819 Tel.: 972-3-5595577 Fax: 972-3-5595581

E-Mail: [info@kol-chen.com](mailto:info@kol-chen.com) Web Site: [www.kol-chen.com](http://www.kol-chen.com)

